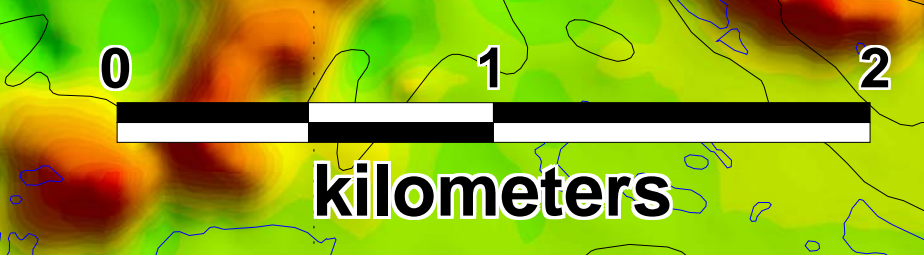


330,000 mE
332,000 mE
334,000 mE
336,000 mE
338,000 mE
340,000 mE

5,952,000 mN
5,950,000 mN
5,948,000 mN

Fe₂O₃ Total %

★ (Red)	60 to 75.4	(5)
★ (Yellow)	40 to 60	(16)
★ (Green)	25 to 40	(6)
★ (Blue)	0 to 25	(7)



MetalsCreek
RESOURCES

Gabbro Lake Project
Churchill Falls, Labrador
Sample Locations/First Derivative Magnetics

Geotech VTEM-M System	UTM Map Sheet 23H/11 & 12
Flown by Geotech Ltd.	July 2011