

**TSXV:MEK**

# **Advancing Newfoundland's Vast Hydrogen and Helium Gas Potential**

**Corporate Presentation - June 2026**

# FORWARD-LOOKING STATEMENTS

During the course of this presentation, Benton Resources Inc. may make forward-looking statements with regards to the company's projects and or business plans. Statements may also be made with regards to the company's business strategy, products, partners, and market position which could be construed as forward-looking. Forward-looking statements are subject to risk and uncertainties that could cause results to be materially different than expectations.

The presentation has been prepared by management of Metals Creek Resources and does not represent a recommendation to buy or sell these securities. Investors should always consult their Investment Advisors prior to making any Investment Decision.

Intersection widths are core widths, unless otherwise stated.



**WHITE HYDROGEN AND HELIUM**

**THE NEW FRONTIER IN WESTERN  
NEWFOUNDLAND**

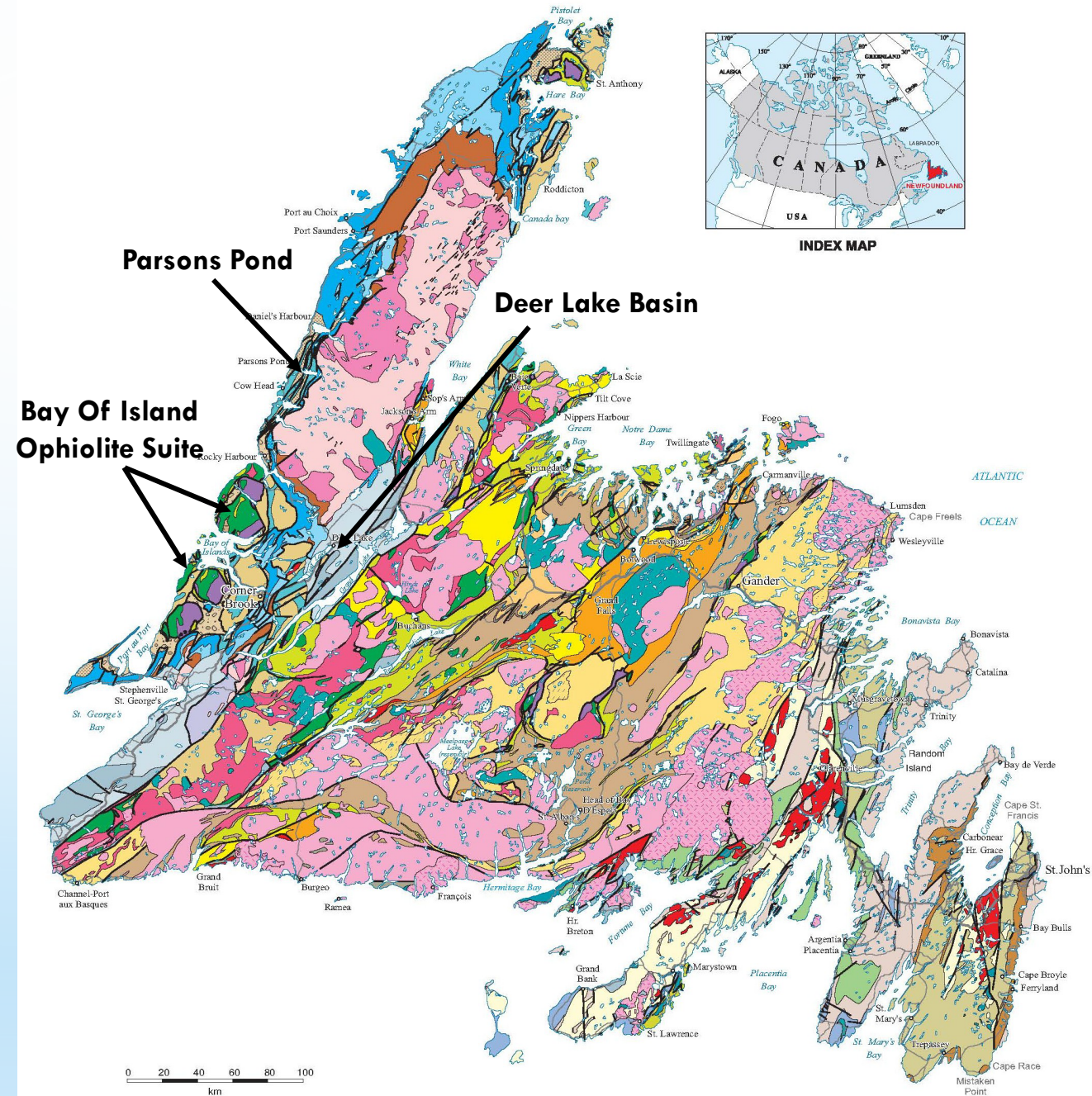


## Newfoundland and Labrador

is currently a premier global destination for mining exploration, consistently ranking as the **top jurisdiction in Atlantic Canada** and 14th worldwide for investment attractiveness in early 2026. The province is experiencing a significant "gold rush" and a surge in critical mineral exploration, with expenditures expected to reach approximately **\$258 million in 2025**.

• **Stable Environment:** Investors cite a predictable regulatory regime and competitive fiscal policies as primary reasons for the province's high ranking.

• **Infrastructure:** Strategically located with access to deep-water ports, shipping lanes to Europe and the US, and a skilled local workforce.



# THE GEOLOGICAL ENGINE: WHY THE WEST COAST?

- **BAY OF ISLANDS OPHIOLITE COMPLEX**

This area is home to one of the world's most complete sequences of ophiolites, which are rare mantle rocks pushed to the surface.

### **Serpentinization Process:**

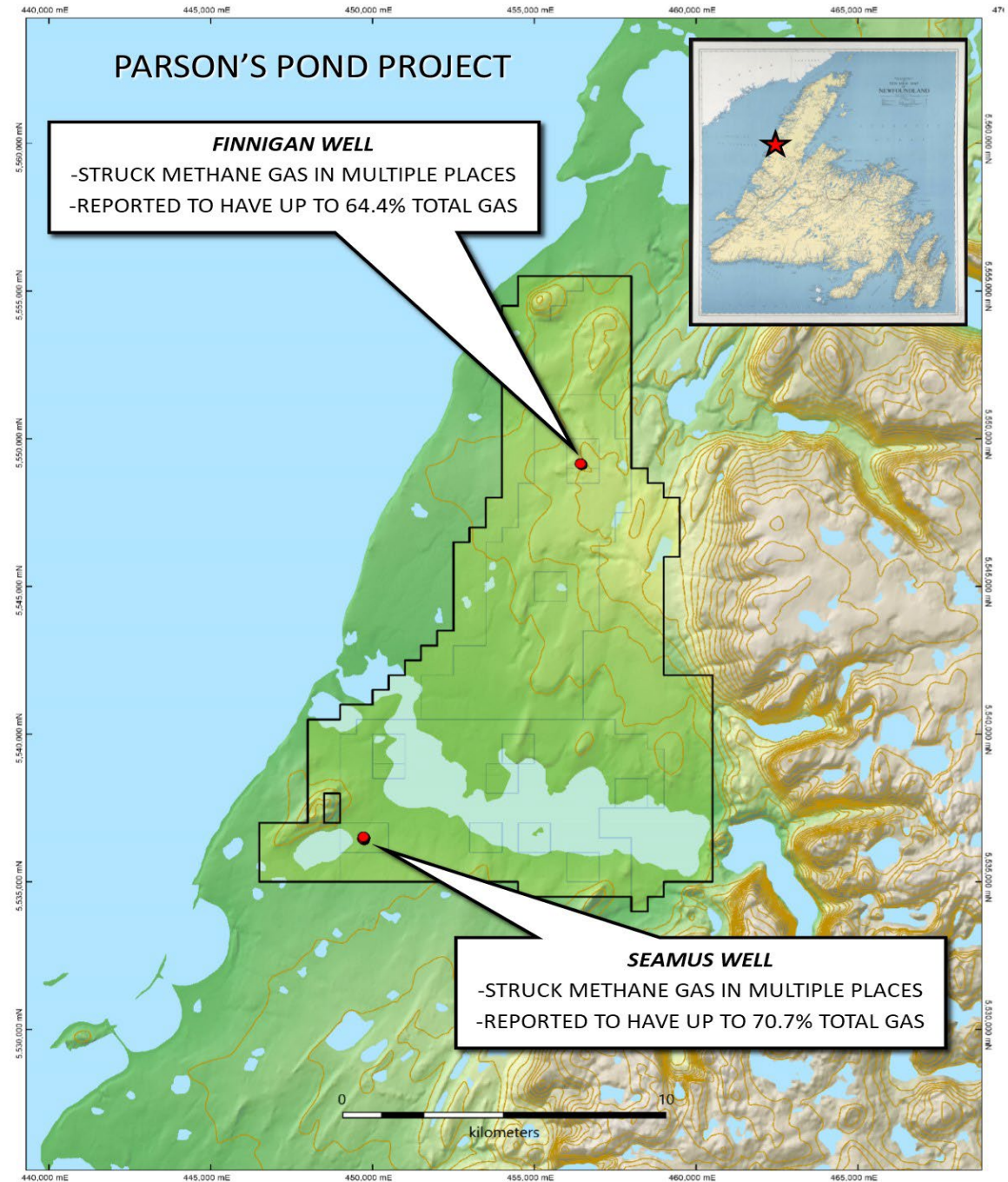
When water reacts with these iron-rich rocks, it triggers a chemical reaction that naturally releases hydrogen gas.

- **PARSONS POND WESTERN NEWFOUNDLAND**

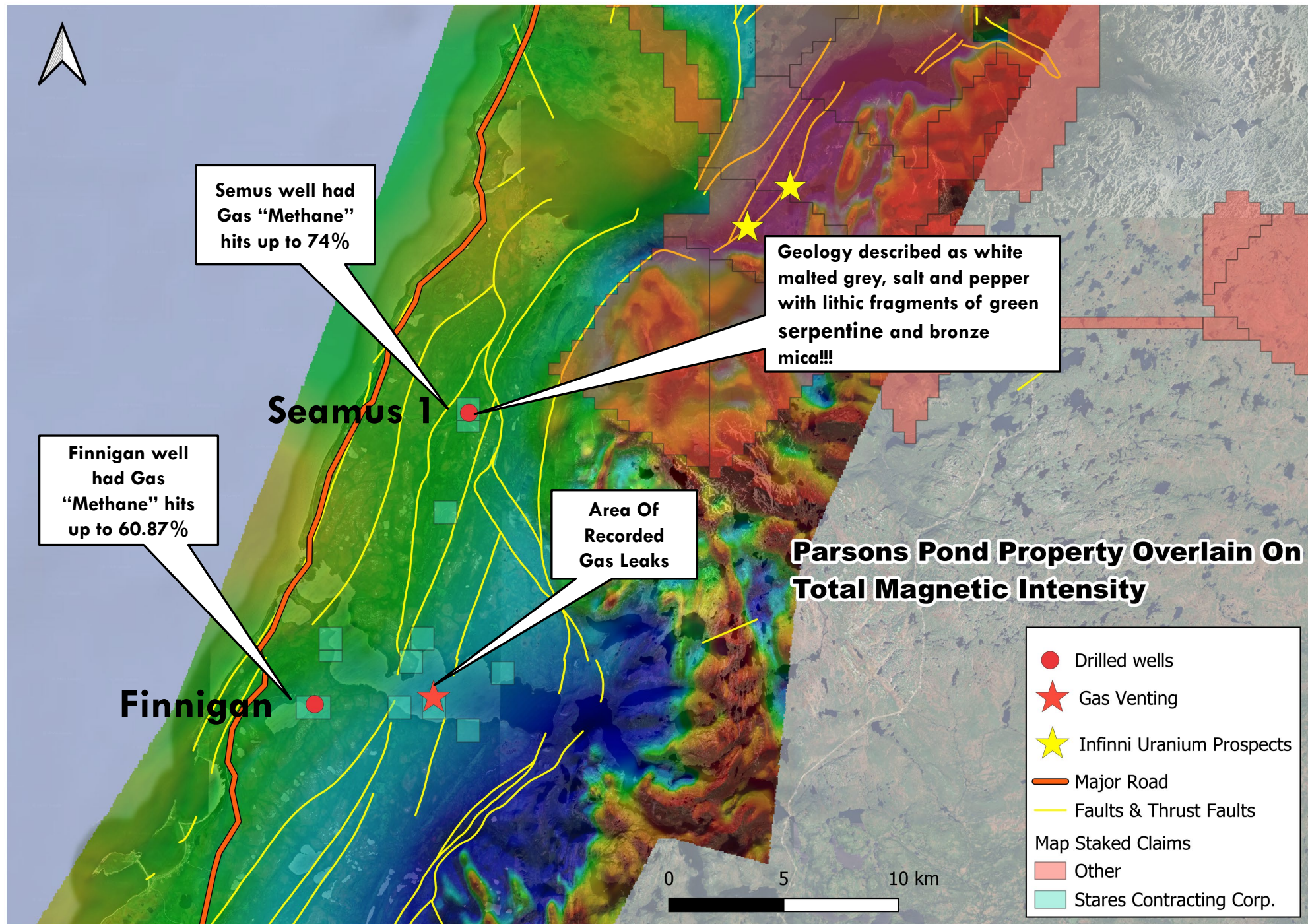
IS AN IDEAL LOCATION TO LOOK FOR "WHITE" (NATURAL) HYDROGEN BECAUSE IT SITS AT THE INTERSECTION OF TWO CRITICAL GEOLOGICAL FEATURES: **IRON-RICH MANTLE ROCKS** THAT GENERATE THE GAS AND **SEDIMENTARY "CAP" ROCKS** THAT CAN TRAP IT.

# PARSONS POND WELL DRILLING AND GAS HITS

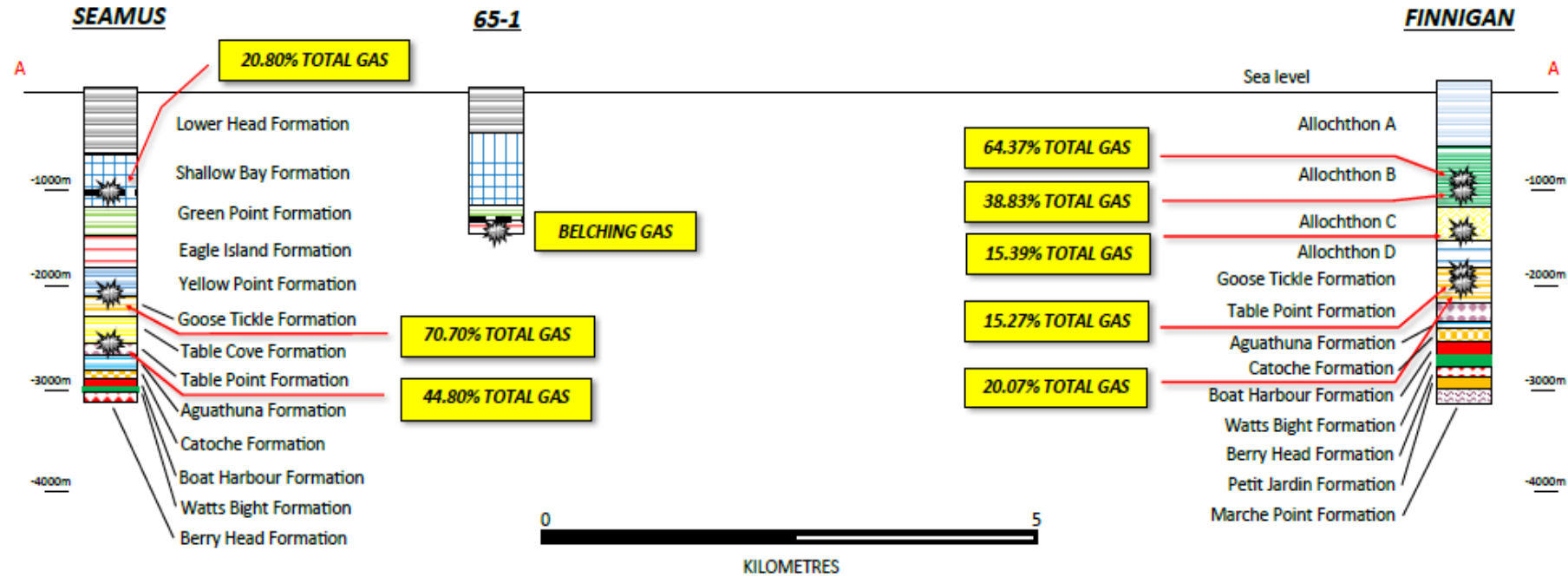
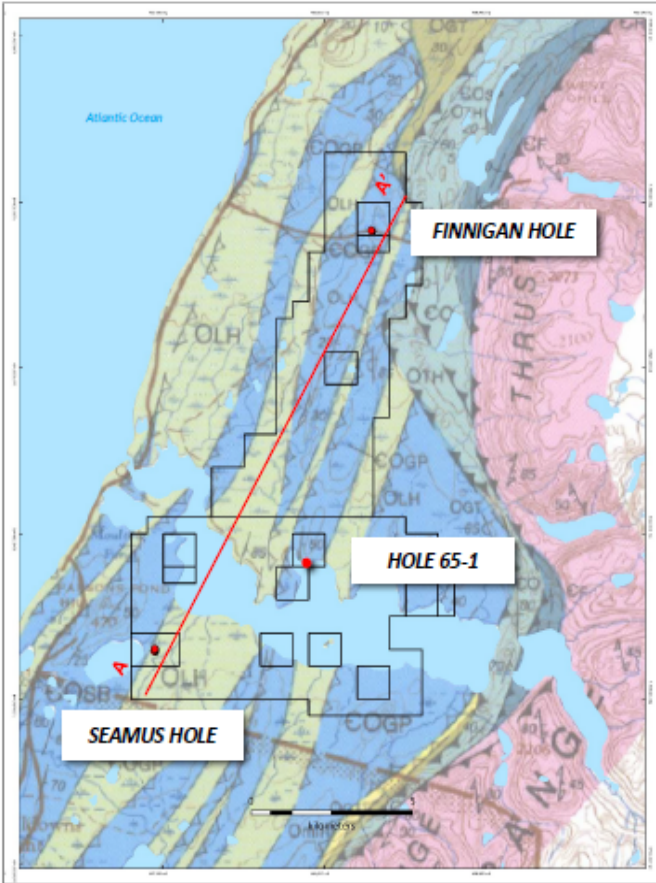
- T Two deep drilling holes located 14.0km apart hit multiple horizons of high-pressure gas
- T Excellent infrastructure with power and roads
- T Detail satellite Imagery shows Hydrogen and Helium leaking at the historical well head area



**PARSONS POND**  
DRILLING HAS BEEN  
CONDUCTED SINCE  
1867 BECAUSE THE  
AREA IS CHARACTERIZED  
BY COMPLEX **THRUST**  
**FAULTING** THAT  
CREATES POTENTIAL  
TRAPS FOR OIL AND  
GAS AND THE  
PRODUCTION OF  
NATURAL WHITE  
HYROGEN AND HELIUM



Two deep drilling holes located 14.0km apart hit multiple horizons of high-pressure gas measuring from 20.07% - 70.7% C1 methane, 29.3% - 79.93% of the other gasses are unknown

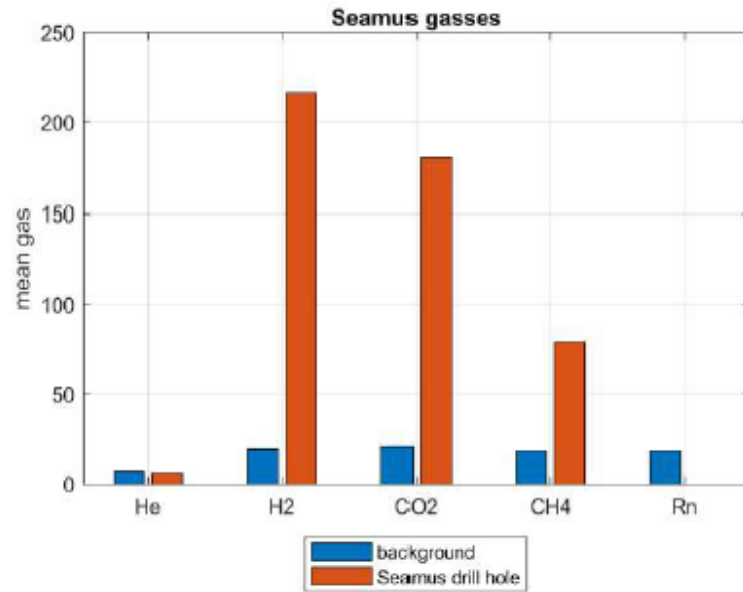


## Target Identification at Seamus Well

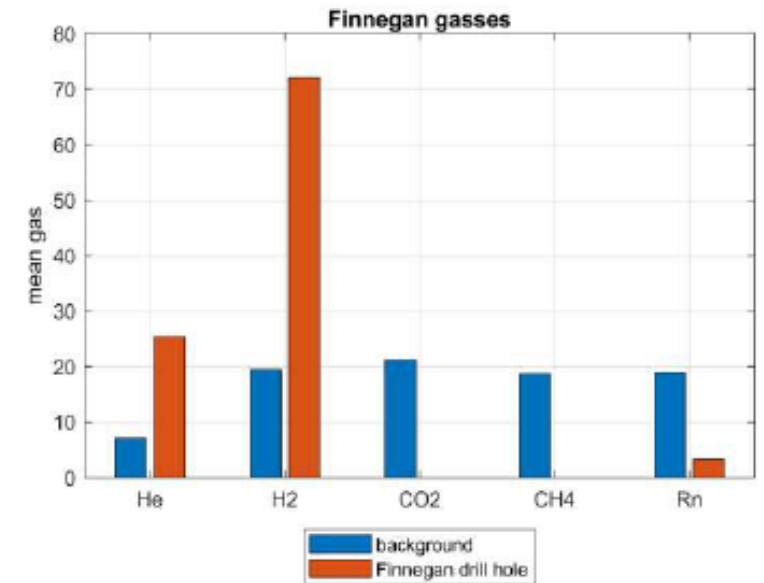
The Seamus #1 well is a critical stratigraphic and exploration test located in the Parson's Pond area of western Newfoundland. Operated by Nalcor Energy (Oil & Gas) and drilled between 2010 and 2011, it serves as a primary reference point for your exploration model, particularly regarding the intersection of methane systems and potential "white" hydrogen.

It was drilled as a deviated "wildcat" well targeting both the Allochthonous sequences (Eagle Island Sands) and the deep Autochthonous Carbonate Platform (St. George Group). Total depth is approximately 3,160 meters.

It is anomalous in H<sub>2</sub>, CO<sub>2</sub> and CH<sub>4</sub>.



Finnegans Well is anomalous in He and H<sub>2</sub>.



# SEAMUS 1 “WELL” & PARSONS POND 1

- **SEAMUS 1** DRILLED TO A DEPTH OF 3160M.
- MULTIPLY GAS HITS UP TO **74.01%** C1.
- DRILLED IN THE SAME AREA AS PARSONS POND 1.
- THE MINERAL **GLAUCONITE** MENTIONED THROUGHOUT THE DRILL LOGS.
- THIS MINERAL UNLIKE PURE QUARTZ SANDSTONES, IS IRON-RICH AND CAN PARTICIPATE IN **REDOX REACTIONS** —SIMILAR TO THE PROCESSES IN MUCH DEEPER VOLCANIC ROCKS— TO PRODUCE HYDROGEN NATURALLY WITHIN THE SEDIMENTARY BASIN.

NEW RESEARCH INDICATES THAT THE MINERAL **GLAUCONITE** IS A SIGNIFICANT POTENTIAL SOURCE FOR **WHITE HYDROGEN** (NATURAL GEOLOGICAL HYDROGEN) BECAUSE ITS FORMATION PROCESS, KNOWN AS AUTHIGENESIS, DIRECTLY GENERATES MOLECULAR HYDROGEN.

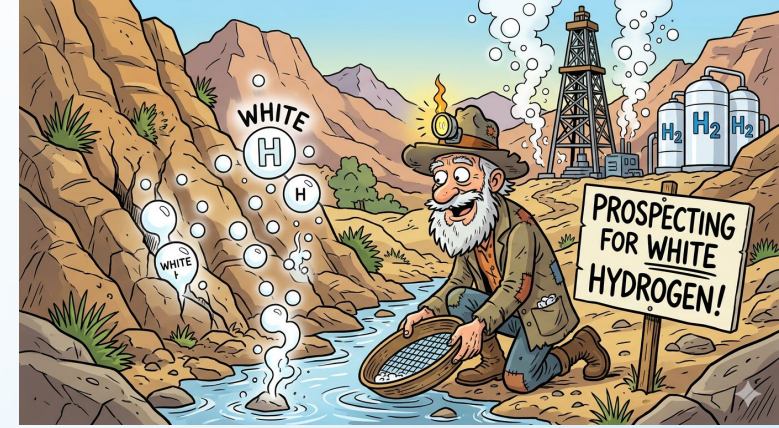
# FINNIGAN WELL RESULTS (GAS)

- **FINNIGAN DRILLED TO A DEPTH OF 3150 METERS.**
- **MULTIPLY HITS OF GAS UP TO 38.83 – 60.87% GAS, (RECORDED AS METHANE).**
- **GEOLOGY DESCRIBED AS WHITE MALTED GREY, SALT AND PEPPER WITH LITHIC FRAGMENTS OF GREEN SERPENTINE WHICH IS A BYPRODUCT OF SERPENTINIZATION, THE PRIMARY CHEMICAL REACTION THAT GENERATES WHITE HYDROGEN.**
- **THESE GEOLOGICAL LOGS SUGGEST ULTRAMAFIC ORIGIN.**
- **MULTIPLY HITS OF GAS UP TO 74.01% IN THE AREA OF GREEN SERPENTINIZATION.**





# SMOKING GUN PROJECT (DEER LAKE BASIN)



- HISTORICALS DRILL HOLES ENCOUNTER HITS OF **HIGH-PRESSURE GAS** IN MULTIPLE DRILL HOLES OVER A LARGE AREA OF THE DEER LAKE BASIN.
- **1921** DRILL HOLE FLOWED **GAS** FOR **12 MONTHS** AND WAS NEVER TESTED
- URANIUM EXPLORATION DRILLING IN **1979** HIT MULTIPLE AREAS OF **GAS**, ALSO NOT EVALUATED
- LATER SAMPLING OF WATER IN **1982** FROM DRILL COLLARS CONFIRMED **HIGH CONCENTRATIONS** OF **HELIUM** UP TO **8900PPB** SUGGESTING SOURCE ROCKS AND GAS BELOW
- SURFACE GAS SOIL SAMPLING BY **EXPERT RUDY WILICK** WILL COMMENCE IN MID JULY

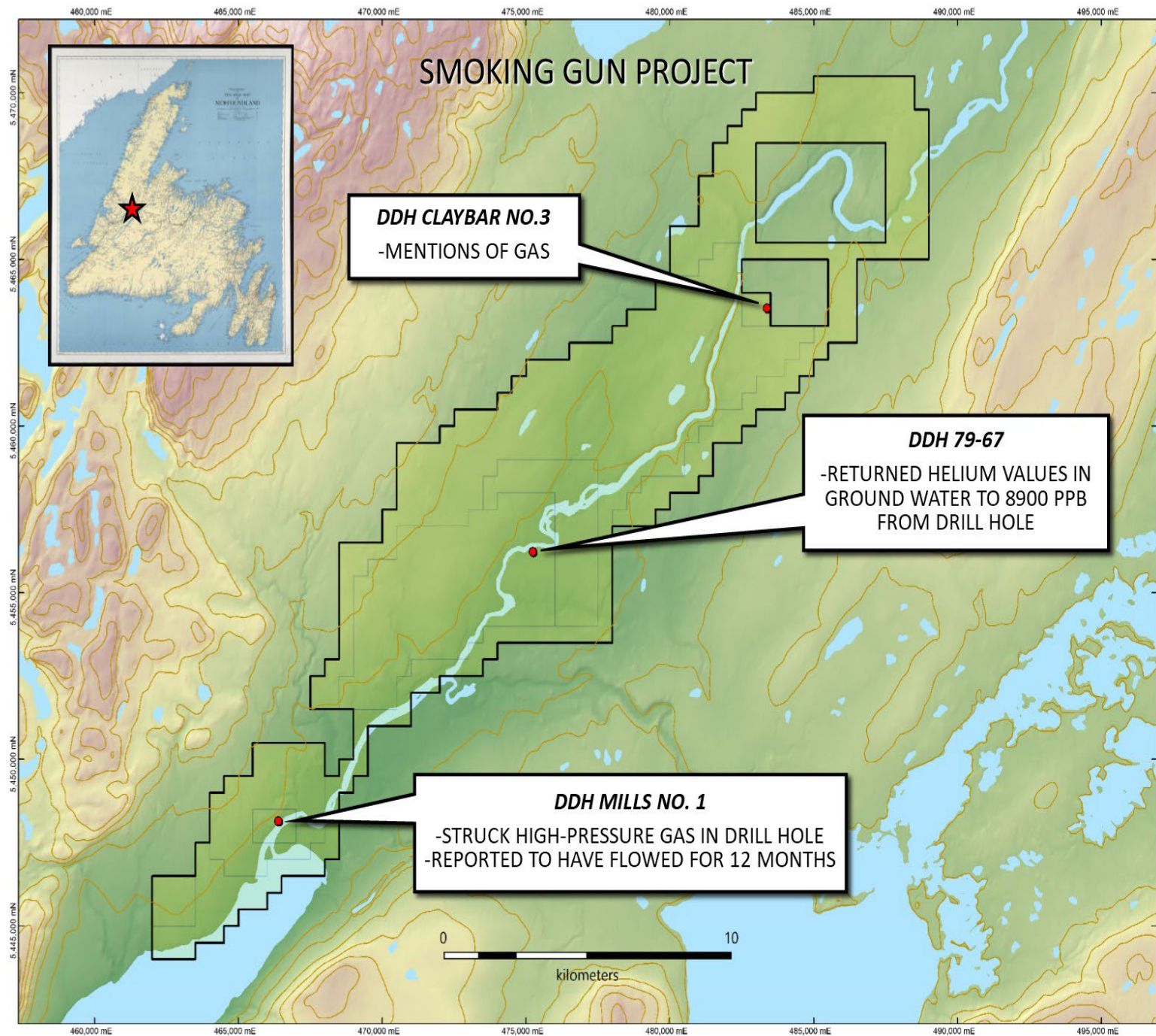
# SMOKING GUN PROJECT (DEER LAKE BASIN)

- T Historical drilling show hits of proven high-pressure gas
- T Excellent infrastructure with power and roads
- T Historical sampling of drill casings show extremely elevated Helium in water sampling

Table 1: Water analysis for He in historic holes

Sample No	DDH No	pH	U ppb	Rn cpm	He pp
WS-61	79-56	6.3	2.00	76	8.3
WS-62	79-57	7.1	0.70	30	139.0
WS-63	79-59	7.4	0.80	71	62.2
<b>WS-64</b>	<b>79-67</b>	<b>7.5</b>	<b>0.15</b>	<b>198</b>	<b>8900.0</b>
WS-65	79-61	7.2	0.15	80	14.9

Ref: [https://gis.geosurv.gov.nl.ca/geofilePDFS/Batch09/PDF/012H\\_0748.pdf](https://gis.geosurv.gov.nl.ca/geofilePDFS/Batch09/PDF/012H_0748.pdf)



# SUMMARY OF HYROGEN-HELIUM PROJECTS

- T** Seven projects acquired in total with excellent infrastructure with power and roads
- T** Historical drilling show hits of proven high-pressure gas at least 4 of the properties acquired
- T** Historical sampling of drill casings show extremely elevated Helium in water sampling at the Smoking Gun project
- T** Detail hyperspectral satellite imagery shows Hydrogen and Helium leaking at both Seamus and Finnigan well head area's
- T** Exploration work including surface gas soil sampling and diamond drilling expected in 2026

# LET'S TALK



Nicholas Konkin, IR  
nick@grovecorp.ca



Alexander Stares, CEO  
astares@metalscreek.com



[www.metalscreek.com](http://www.metalscreek.com)

Join our investor list for  
news & drill updates.